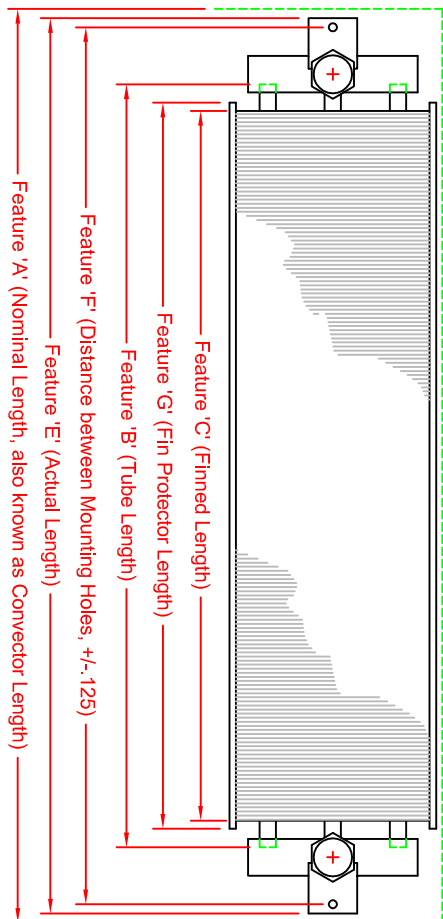
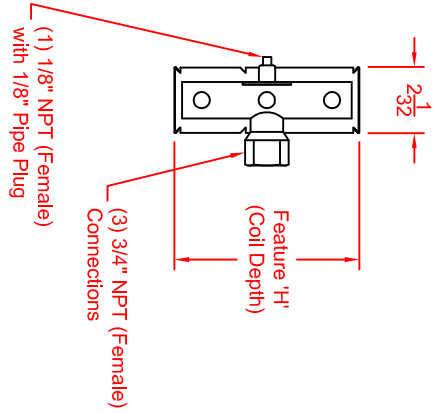
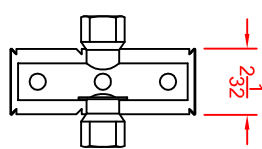


Feature 'D' (Header Centre to Centre)

Convector Cabinet (REF)



- Notes:
1. Coil depth of 6" shown.
 2. Material: Headers: Copper - min 1.00" O.D.
Tubes: Copper - 0.50" O.D. x 0.015 wall after expansion
Fins: Aluminum - 7 fpi - 0.012" thick
 3. All coils are 7 FPI with 3/4" NPT connections unless otherwise noted.

Nominal Coil Length 'A'	Tube Length 'B'	Finned Length 'C'	Header Centre to Centre 'D'	Actual Overall Length 'E'	Mounting Hole Distance Centre to Centre 'F'	Fin Protector Length 'G'
16	11.375	9.75	12	15.438	14.875	10.25
18	13.375	11.75	14	17.438	16.875	12.25
20	15.375	13.75	16	19.438	18.875	14.25
24	19.375	17.75	20	23.438	22.875	18.25
28	23.375	21.75	24	27.438	26.875	22.25
32	27.375	25.75	28	31.438	30.875	26.25
36	31.375	29.75	32	35.438	34.875	30.25
40	35.375	33.75	36	39.438	38.875	34.25
44	39.375	37.75	40	43.438	42.875	38.25
48	43.375	41.75	44	47.438	46.875	42.25
56	51.375	49.75	52	55.438	54.875	50.25
60	55.375	53.75	56	59.438	58.875	54.25
64	59.375	57.75	60	63.438	62.875	58.25

Nom. Conv. Depth	Actual Coil Depth 'H'
4	3.688
6	5.688
8	7.688
10	9.688

Calculation	Length Result
Nominal Length (A) = A	
Actual Length (E) = A - .562	
Centre to Centre Length (D) = A - 4	
Finned Length (C) = A - 6.25	



Manufacturers of Hydronic Heating Products
101B Devon Road, Brampton,
Ontario, Canada, L6T 5A4
Tel: 905-453-0446, Fax: 905-453-0675

SCALE: 1=6
DRAWN: RL
DATE: 04/11/03
REVISION: 0
PROJECT: ARCH: ENG: OUR FILE:

SIGMA CONVECTOR COIL
DETAILS
SHEET 1